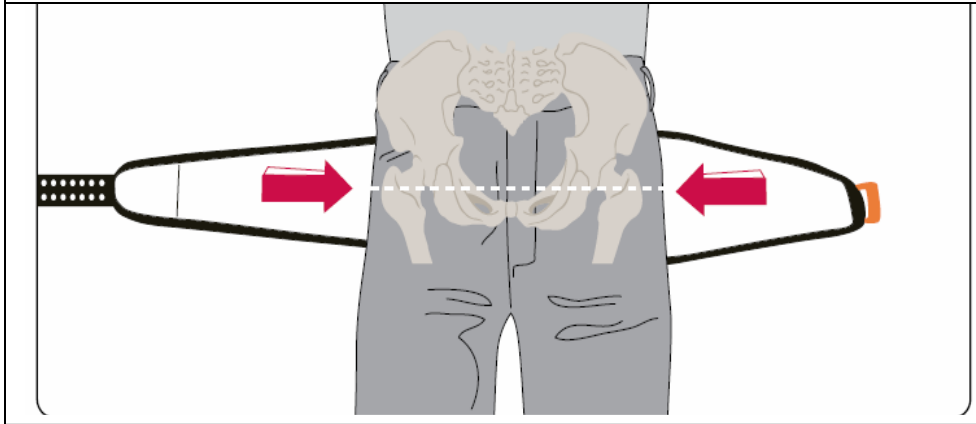
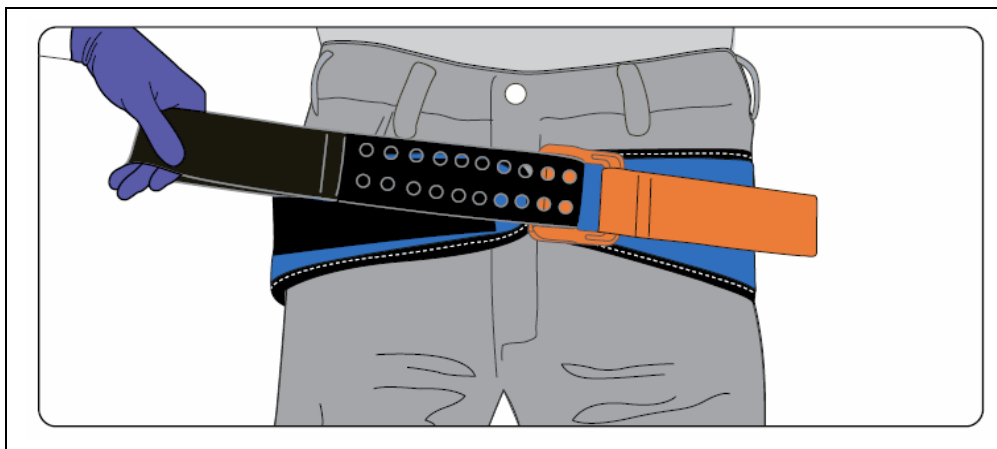


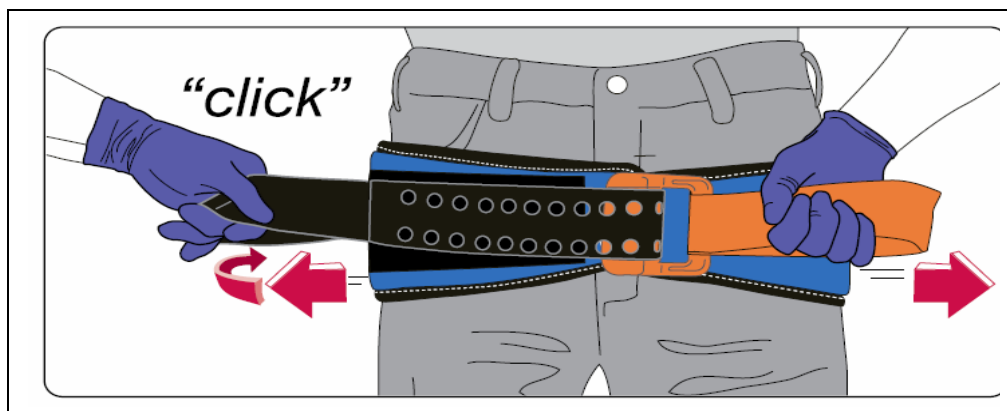
## SAM Pelvic Sling



Remove Items from IP's pockets. Place Sam Sling (grey side up) beneath IP at level of Trochanters.



Place black strap through buckle and pull completely through.



Hold Orange Strap and pull the Black Strap in the Opposite Direction until you feel and hear the buckle click. Maintain tension and immediately press Black Strap onto surface of SAM Pelvic Sling to secure